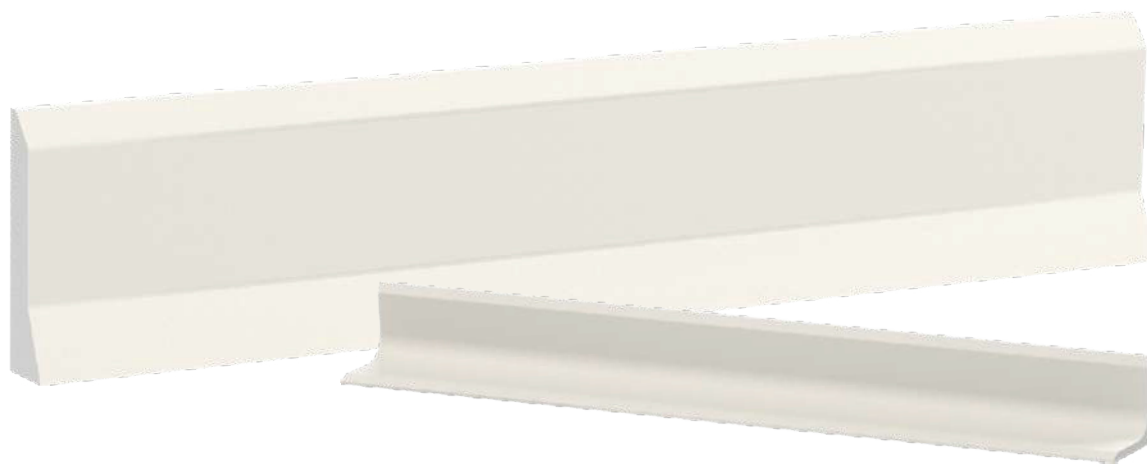


Installation of baseboards and kerbs of Politon-Ukraine company production



1 Before installation, make sure that you have full access to the working area

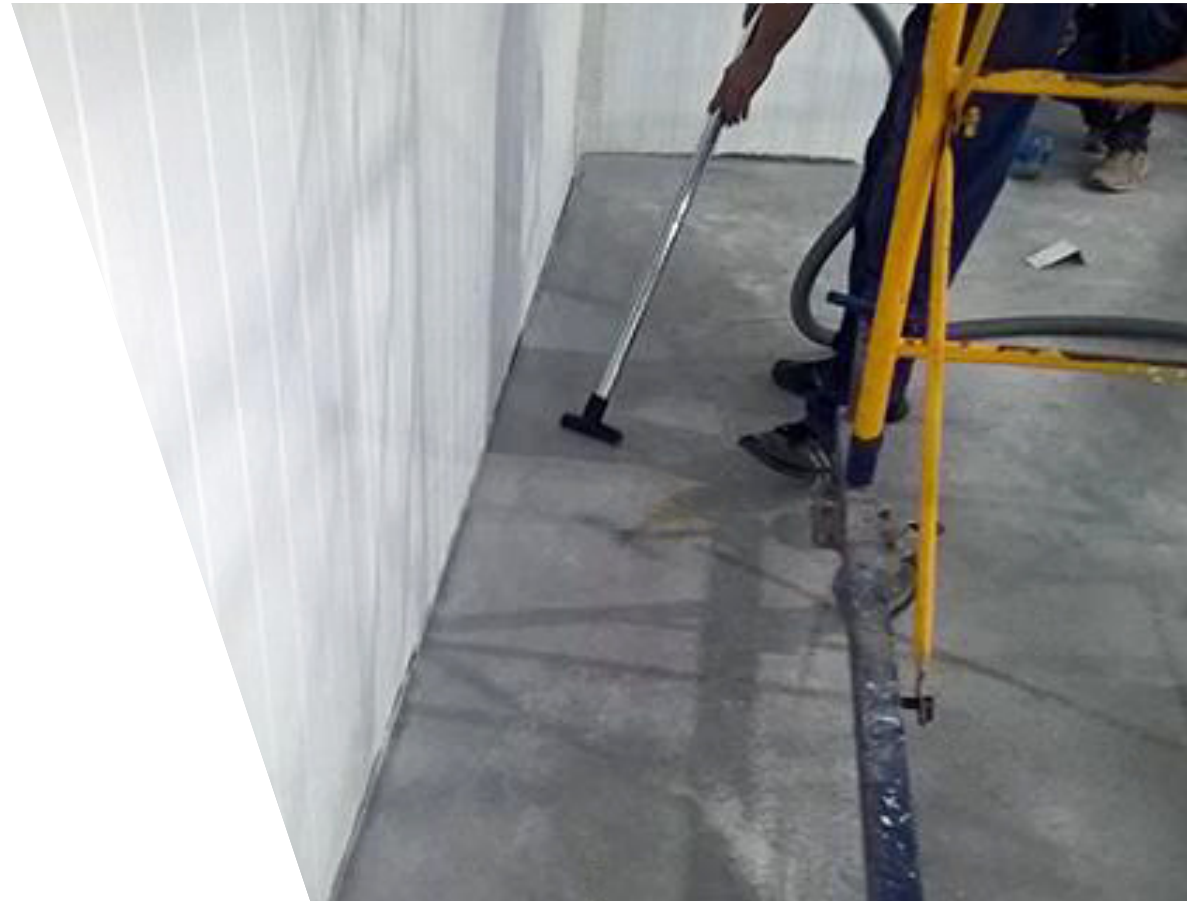
2 The floor should be dry, without visible dirt and dust, without oily deposits

3 Tolerable floor roughness is 1 cm/lin.m

Step 1

Clean the surface

The surface should be dry, free from dust and visible dirt. Degrease if necessary.



Step 2

Apply primer

Apply POLYFLEX MS primer to the surface.



Step 3

Prepare the baseboards (kerbs) end and corner parts, set a level on the wall behind them.



Step 4

Apply Polyflex High Teck MS glue to the binding surfaces:

- a continuous line of glue-sealant is applied to the floor;
- a wavy line along the back side of the baseboard (kerb).



Step 5

Affix the baseboard

at an angle of 95 degrees:

- the upper part of the baseboard is pressed against the wall;
- the lower part is left with a small gap from the wall.

Align the affixed baseboards according to the level set on the wall.



Use construction wedges to level the baseboards.



The baseboard (kerb) should create a visually smooth line from above.

Step 6

**Wait 24 hours
for the glue to dry.**

After the glue has dried, seal the joints with the wall, the floor and between the baseboard parts with Polyflex Industry MS sealant.



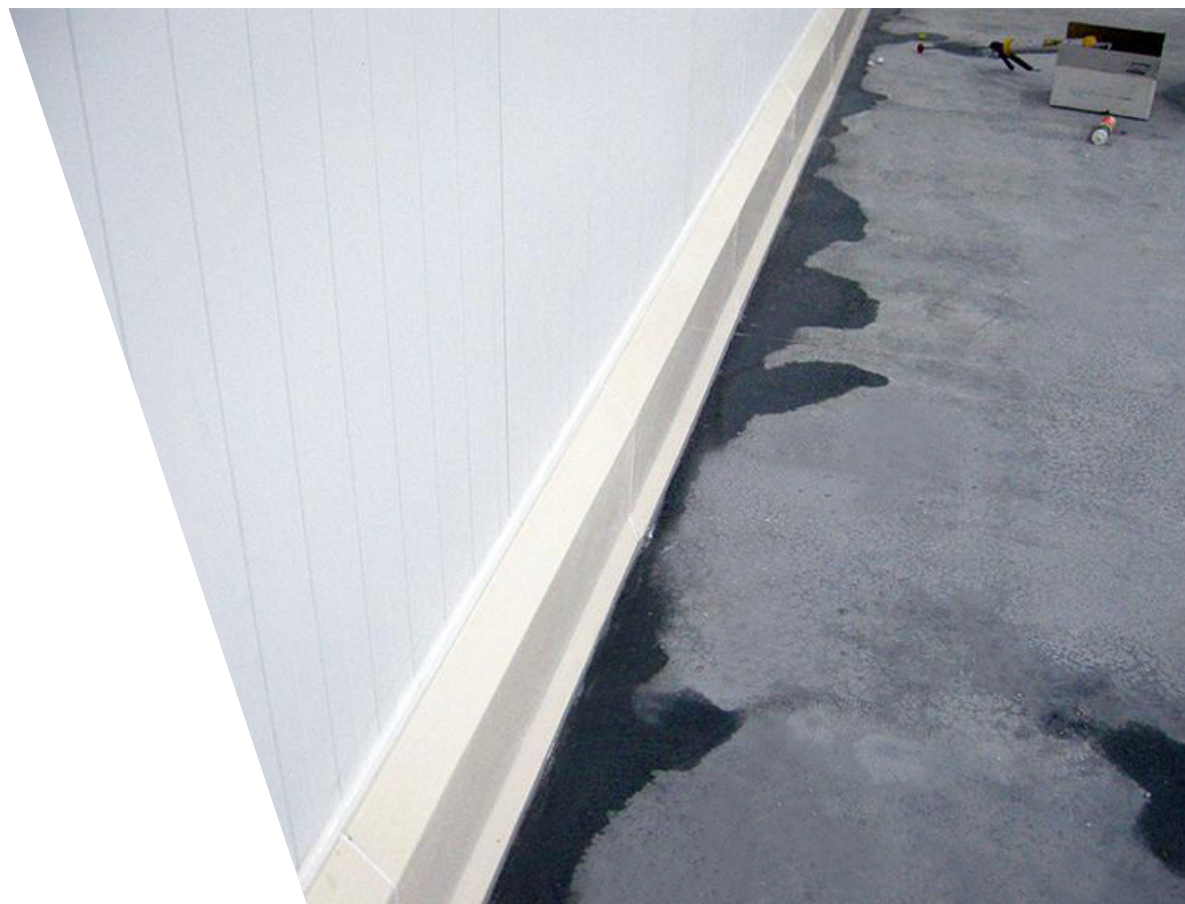
Step 7

Mounting pins must be removed or recessed under the baseboard (kerb).



Step 8

- distribute the soap solution over the sealant layer;
- without a soap solution, the glue will stick to hands and tools;
- remove the sealant excess;
- wait 24 hours for the glue to dry.



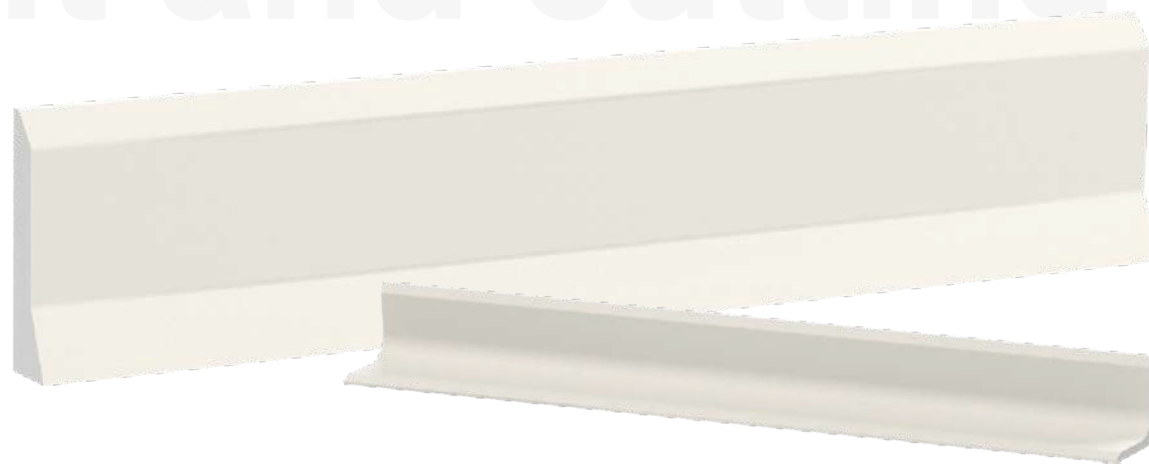
For installation, use a foil pack applicator gun (600 ml).



For cutting baseboards (kerbs) use a diamond cutting wheel.



Recommendations for the selection of equipment and cutting modes for the baseboards and kerbs manufactured by TOV Politon-Ukraine



Рекомендовані вимоги до обладнання

№	Parameter	Value
1	Power, not less, W	3000
2	The depth of the cut at an angle of 90°, not less than, mm	120
3	The table width, at least, mm	500*

*the lack of table width can be compensated by the width of the movable carriage where the product is placed. The length of all types of baseboards and kerbs is 1000 mm (except for shorter auxiliary elements). It should be noted that when cutting a meter-long kerb near its end, the cutting machine should not fall due to the displacement of the center of mass.

As an example, we can recommend the GMS BCZ 600 cutting machine and others similar to it.

Tools

Distar Granite 1A1R 350 diamond cutting wheels are used for cutting baseboards of all types during the production of TOV Politon-Ukraine. It should be noted that the size of the wheel is regulated by the parameters of the equipment used, with the conditions specified in the Recommended equipment requirements table.





Cutting fluid

During the production of TOV Politon-Ukraine, when cutting kerbs of all types, water to the cutting area is supplied in the amount of 5 liters per minute of the work process.

Cutting modes

The cutting depth is regulated by the thickness of the kerb or baseboard being cut, and varies (as in the case with kerbs) from 10 mm in the thinnest part of the BR200 profile to 120 mm in the thickest part of the BR400 profile.

The cutting speed is regulated by the equipment specifications and on a more frequent basis amounts to 2800-2950 rpm.

The feed of such type of equipment is always manual.